

LANE MINE

Bonanza Silver-Gold Vein System

Yavapai County, Arizona, U.S.A.

Bradshaw Mountains | Crown King District | 6 Claims / 120 Acres

| | | | | |
|---|--|----------------------------------|---|--|
| LAND PACKAGE 6 Claims / 120 Acres | PEAK SILVER GRADE ~31,000 g/t Ag | GOLD GRADE ~5.8 g/t Au | SHIPPING GRADE >6,850 g/t Ag | VEINS IDENTIFIED 3 Parallel Structures |
|---|--|----------------------------------|---|--|



ARIZONA LOCATION

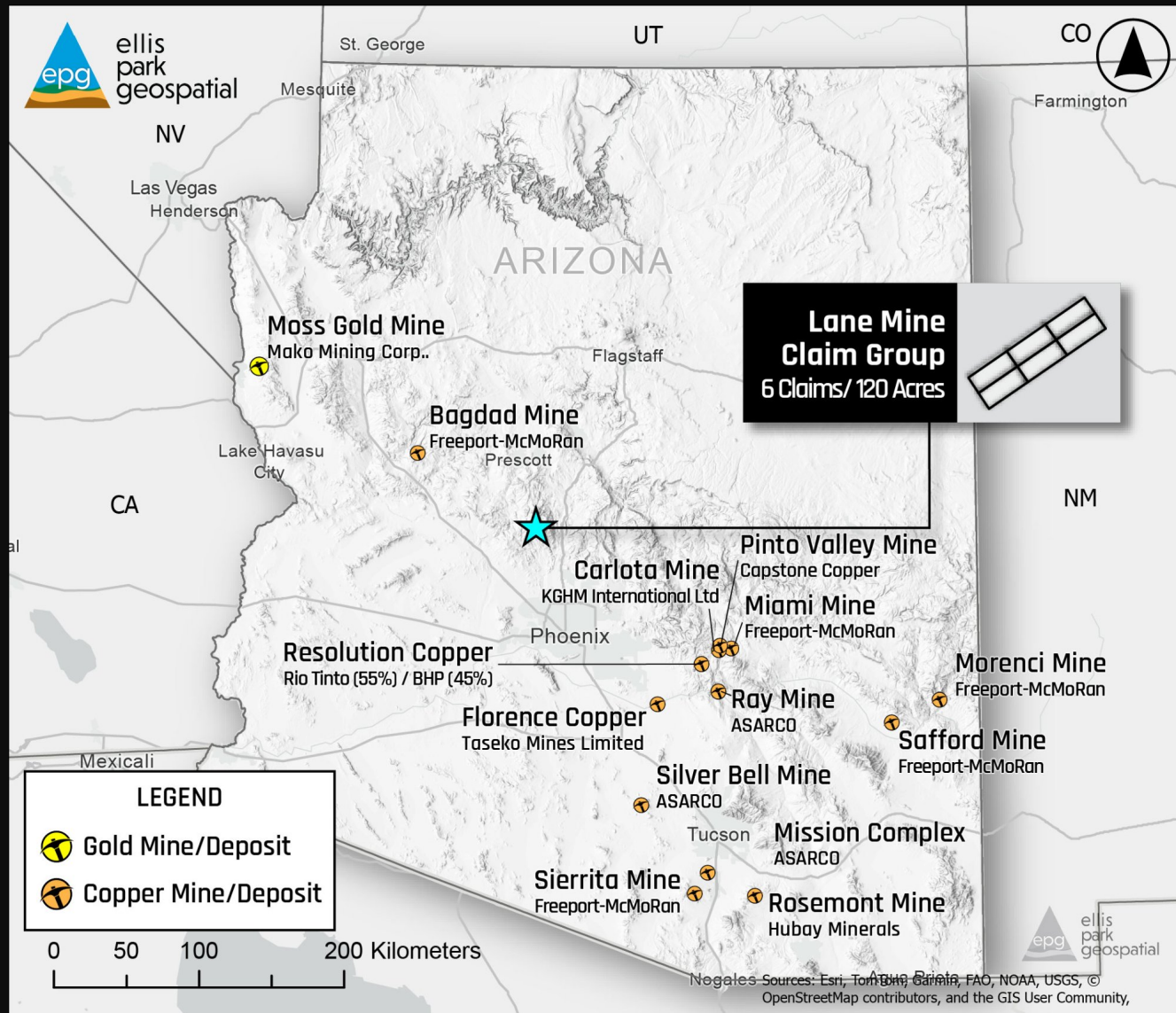
Statewide Mining Context — Yavapai County, AZ

ARIZONA LOCATION

- Yavapai County, central Arizona
- ~4.5 miles south of Crown King in the Bradshaw Mountains
- Within one of Arizona's most historically productive precious metals belts
- Surrounded by major copper and gold operations statewide

MINING DISTRICT CONTEXT

- Arizona hosts world-class Cu-Au deposits: Morenci, Resolution, Bagdad, Safford
- Bradshaw Mountains belt is the primary historic Au-Ag producer in the state
- Crown King District supported active mining from the 1870s through early 1900s
- Lane Mine sits in a structurally favorable corridor within this belt



LOCAL REGIONAL CONTEXT

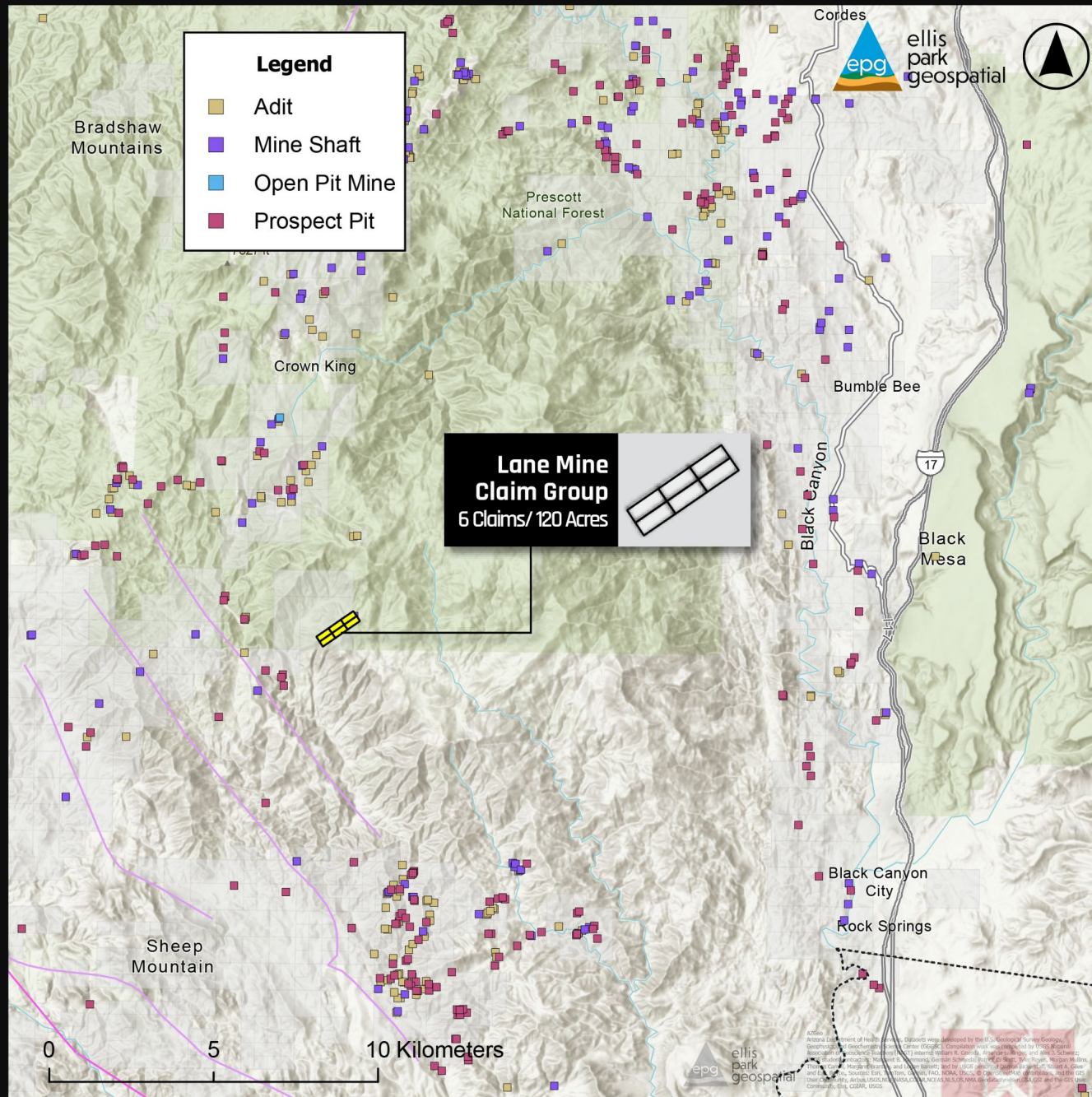
Historic Mine Distribution — Bradshaw Mountains

LOCAL MINE DISTRICT

- Dense concentration of historic adits, shafts, and prospect pits in the Bradshaw Mountains
- Crown King area hosts dozens of historic workings along parallel structural corridors
- Lane Mine claims lie on a well-defined NE-trending vein trend
- Black Canyon provides the primary access corridor from Phoenix (~90 km south)

INFRASTRUCTURE

- Highway 17 provides paved access to within 25 km of the property
- Forest Service roads (FS233, FS711) provide site access
- Power grid accessible via Black Canyon corridor
- Crown King supports local services and staging



REGIONAL GEOLOGY

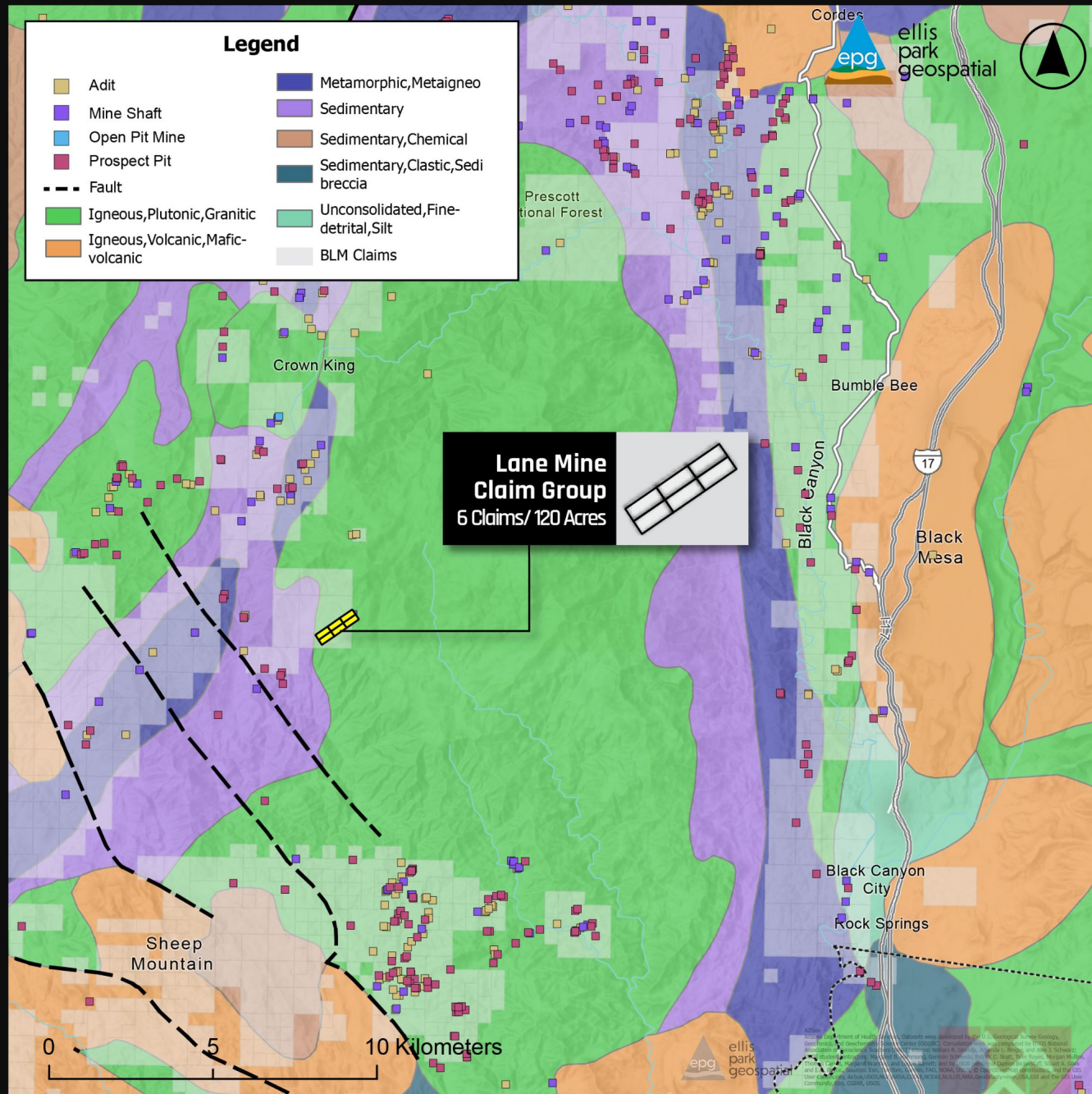
Bedrock Geology & Structure — Bradshaw Mountains

GEOLOGICAL SETTING

- Property hosted in muscovite-biotite granite of Precambrian age
- Flanked by igneous volcanic (mafic) and metamorphic/metaigneous terranes
- Large fault system trends NW through the district — a major structural control
- Sedimentary sequences occupy valley-floor corridors to the east

VEIN SYSTEM

- Three parallel quartz veins within an ~18 m structural corridor
- Veins strike N50°E, dip ~75° west
- Mineralization: galena and sphalerite carrying Ag, Au, Pb, Zn
- Vein widths: 10-20 cm high-grade streaks up to ~1.2 m ore zones
- Only the center vein has been historically mined



PROJECT DETAIL

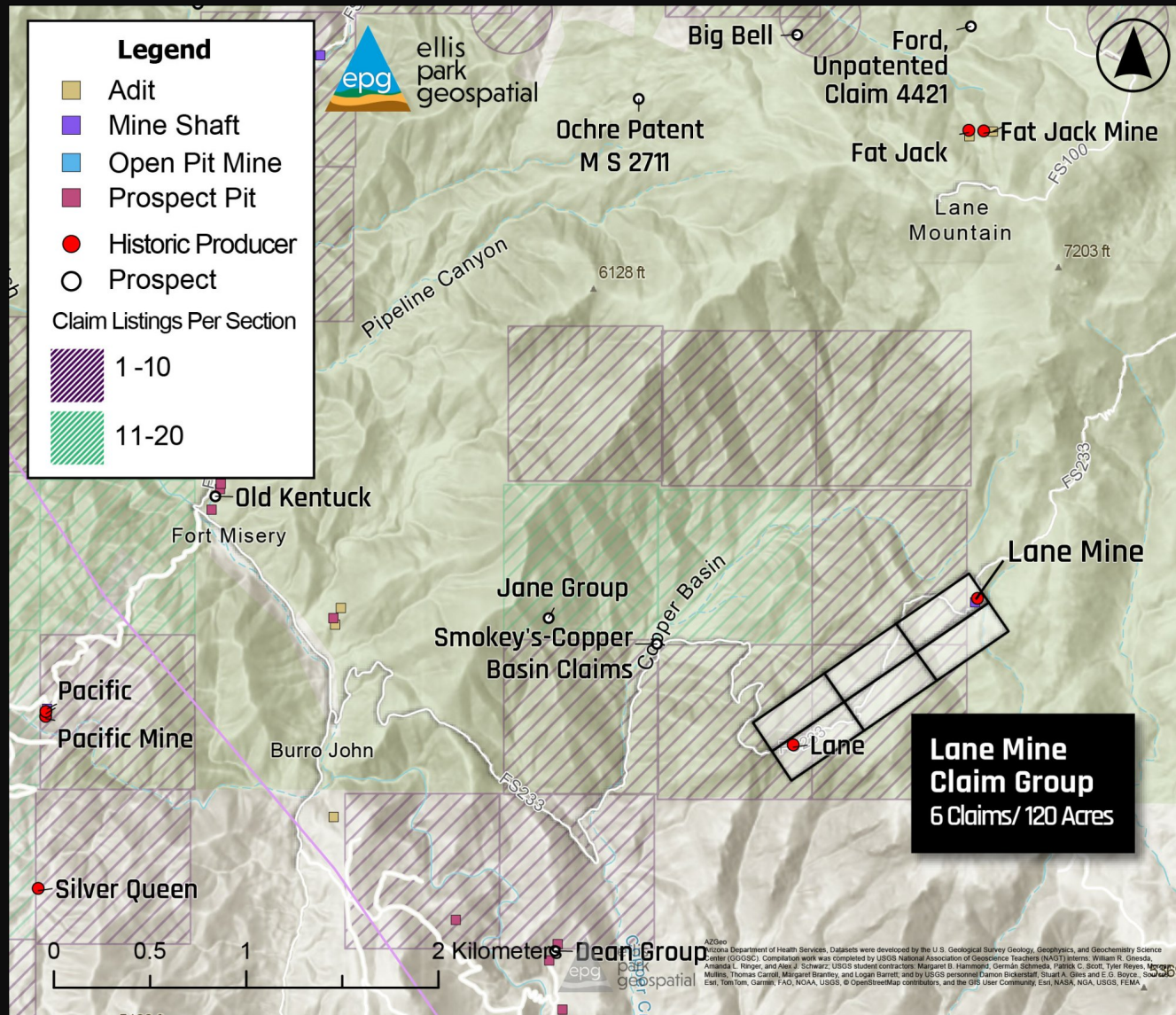
Lane Mine Claim Group — 6 Claims / 120 Acres

PROPERTY DETAIL

- 6 unpatented lode mining claims covering ~120 acres
- Claims aligned along the NE-trending vein corridor
- Lane Mine workings located on the eastern margin of the claims
- Fat Jack Mine to the northeast — same structural trend
- Pipeline Canyon and Copper Basin define local watershed

HISTORIC WORKINGS

- Shaft development and ~66 m drift tunnel (1880s)
- Stoping on center vein confirmed ore continuity
- Later exploration tunnel driven ~122 m toward orebody
- Tunnel stopped ~62 m short of vein — ore shoot untested at depth
- Pacific Mine and Fort Misery are nearby analogue workings



HISTORIC GRADES & EXPLORATION UPSIDE

BONANZA SILVER-GOLD GRADES

| | |
|---------------------------------|----------------|
| Peak Silver Grade: | ~31,000 g/t Ag |
| Additional Sampling: | ~8,040 g/t Ag |
| Historic Shipping Grade: | >6,850 g/t Ag |
| Gold Grade: | ~5.8 g/t Au |

Bonanza-grade polymetallic vein values rarely encountered in modern exploration.

HISTORIC DEVELOPMENT

- 1880s shaft development and ~66 m drift tunnel
- Stopping carried out on the center vein only
- Later tunnel driven ~122 m toward the orebody
- Tunnel stopped ~62 m short of vein — untested at depth
- Downward extension of high-grade shoot remains open

THREE KEY UPSIDE DRIVERS

1. Only One of Three Veins Mined

Two parallel hanging-wall and footwall veins remain essentially untouched within the ~18 m structural corridor.

2. High-Grade Shoot Untested at Depth

The later exploration tunnel stopped 62 m short of the orebody. The down-dip extension of the ore shoot has never been tested.

3. Exceptional Silver Grades

Values up to ~31,000 g/t Ag are typical of historic bonanza silver camps — rarely encountered in modern projects.

BOTTOM LINE

Lane Mine is a high-grade silver-gold vein system with extreme silver values, multiple parallel structures, and minimal historic development. The opportunity is to test two unmined veins and the down-dip extension of the historic ore shoot.

LANE MINE

Bonanza Silver-Gold Vein System

Yavapai County, Arizona, U.S.A. | 6 Claims / 120 Acres

Prepared by Ellis Park Geospatial and HMK Mining | March 2026

